



2019-2020 Season

# La Traviata

## PROPS RUN

Bruce/White

Ricordi

printed on: 10/18/2019 10:10 PM

Version: Final

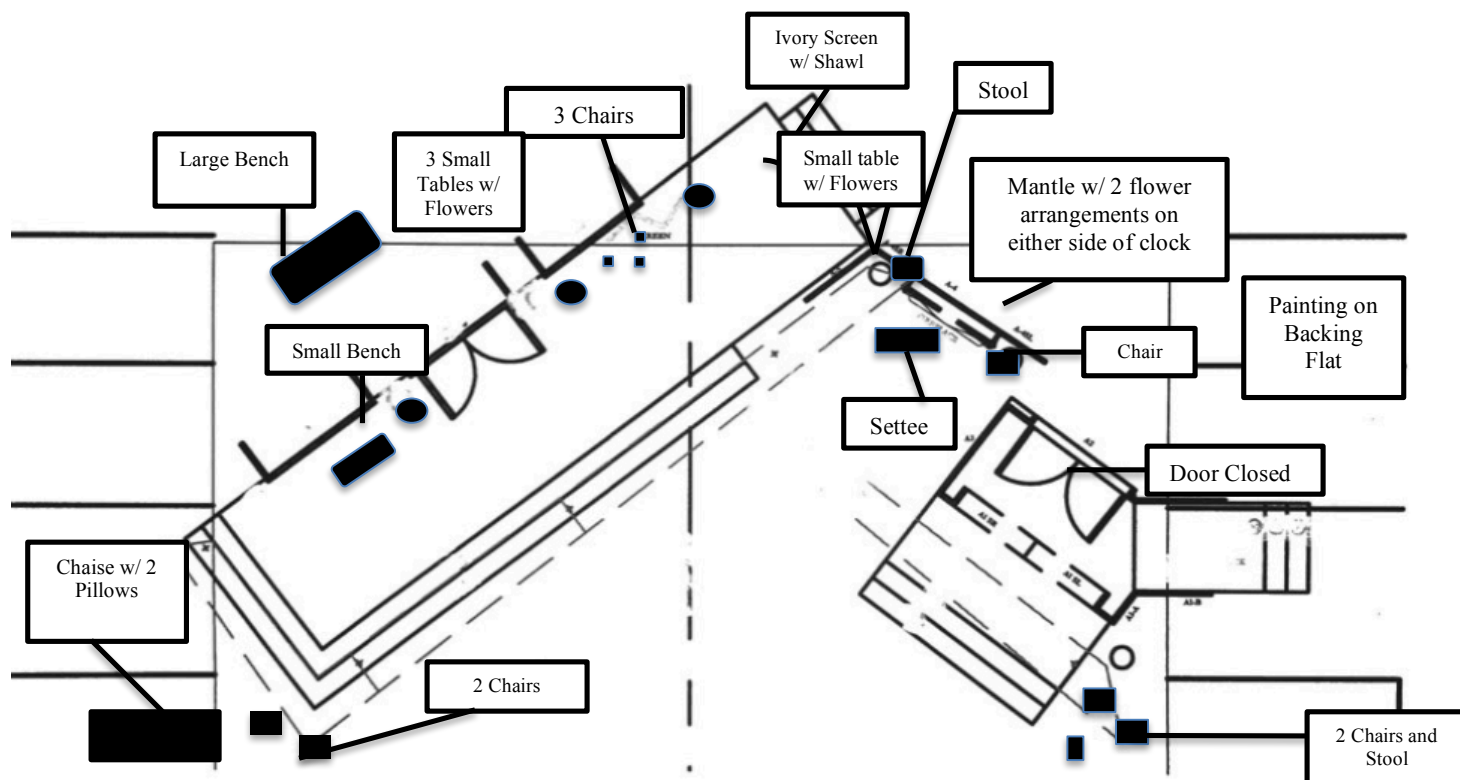
S. Ackerman

### PRE-SHOW NOTES

WHERE	WHAT	WHO
ONSTAGE	<b>SWEEP&amp; MOP</b> <b>CHECK</b> ALL SPIKE MARKS AND REPLACE AS NEEDED	ALL
BACKSTAGE	<b>SET</b> CHAISE IN SR 1 <b>PRESET</b> ALL ONSTAGE AND BACKSTAGE HAND PROPS/FURNITURE	

STAGE LEFT PROP TABLE	ONSTAGE [BLUE]	STAGE RIGHT PROP TABLE
2 FANS (VIOLETTA) HANKY (VIOLETTA) 2 FANS (FLORA) WHITE CAMILIA FLOWER (VIOLETTA) 2 CHAMPANGE BOTTLES (STEVE/MIKE) CHAMPAGNE FLUTE AND BOTTLE w/ H2O (DOM)  LOCKET (GERMONT) WALKING STICK (GERMONT) STACK OF MONEY (ALFREDO)  WALLET WITH MONEY (ALFREDO) STACK OF MONEY (BARON) 2 SETS OF HORNS (MALE DANCERS) BLACK MASK (VIOLETTA)  DOCTORS BAG (DR. GREVIL) ROSARY (ANNINA)  DRESSING: 2 BLUE VASES, MINI CHEST w/ COINS	8 CHAIRS LONG BENCH SHORT BENCH 4 CIRCULAR TABLES w/ 4 FLOWER ARRANGEMENTS IVORY SCREEN w/ VIOLETTA'S SHAWL SETTE MANTLE w/ 2 FLOWER ARRANGEMENTS/CLOCK 2 SHORT STOOLS	TRAY w/ 12 CHAMPAGNE FLUTES (STEVE) TRAY w/ 12 CHAMPAGNE FLUTES (MIKE) TRAY w/ 10 CHAMPAGNE FLUTES (DOM) 3 WHITE CLOTH NAPKINS ON TRAYS (SUPERS) WINE BOTTLE w/ 2 CHAMPANGE FLUTES (DOM) JEWELRY BOX (BARON) WINE BOTTLE/CLOTH NAPKIN (DAVID)  ORANGE FOLDER (ANNINA) BROWN SADDLE/BROWN BRIDLE (ALFREDO) BLACK SADDLE/BLACK BRIDLE (CORO. STEVE) RIDING CROP (VIOLETTA) BREAKUP LETTER (DANIEL)  7 TAMBOURINES w/ RIBBONS (CORO. RICKY) EMPTY BIN FOR CHAMPANGE GLASSES
STAGE LEFT 1		STAGE RIGHT 1
ACT 2.2 STAIR UNIT		CHAISE WITH 2 PILLOWS
BACKSTAGE FURNITURE		BACKSTAGE FURNITURE
<b>ACT II.1:</b> DESK w/ INK BOTTLE, PEN LETTER PAPER FOR BARON NOTE AND BREAKUP LETTER BORDERED PAPER WICKER COUCH WICKER CHAIR WICKER CIRCULAR TABLE w/ VASE OF FLOWERS, INVITATION PALM TREE BROWN RUG PLATES FOR RAIL (PRESET ON SET) SCREEN W/ PLANTS <b>II.2:</b> GREEN TABLE DRESSED SMALL GAME TABLE w/ CARDS <b>ACT III:</b> BED w/ SHEET, BLANKET, 4 PILLOWS, 3 THROW PILLOWS, W/ BLOODY HANKY, JOURNAL W/ NOTE INSIDE END TABLE w/ PITCHER, H2O GLASS, LOCKET, BRUSH, COMB, MIRROR, 3 AMBER BOTTLES 2 MOVING BOXES w/ BOOKS 2 PICTURE FRAMES TRUNK w/ BODICE/SKIRT		<b>ACT II.1:</b> 1 PALM TREE SADDLE HORSE BONSAI 2 BASKET PLANTS 2 LARGE LEAFY TREES  <b>ACT II.2:</b> LARGE GAMING TABLE w/ DECK OF CARDS SMALL GAMING TABLE w/ DECK OF CARDS GREEN TABLE CLOTH 3 BLACK GOLD CHAIRS

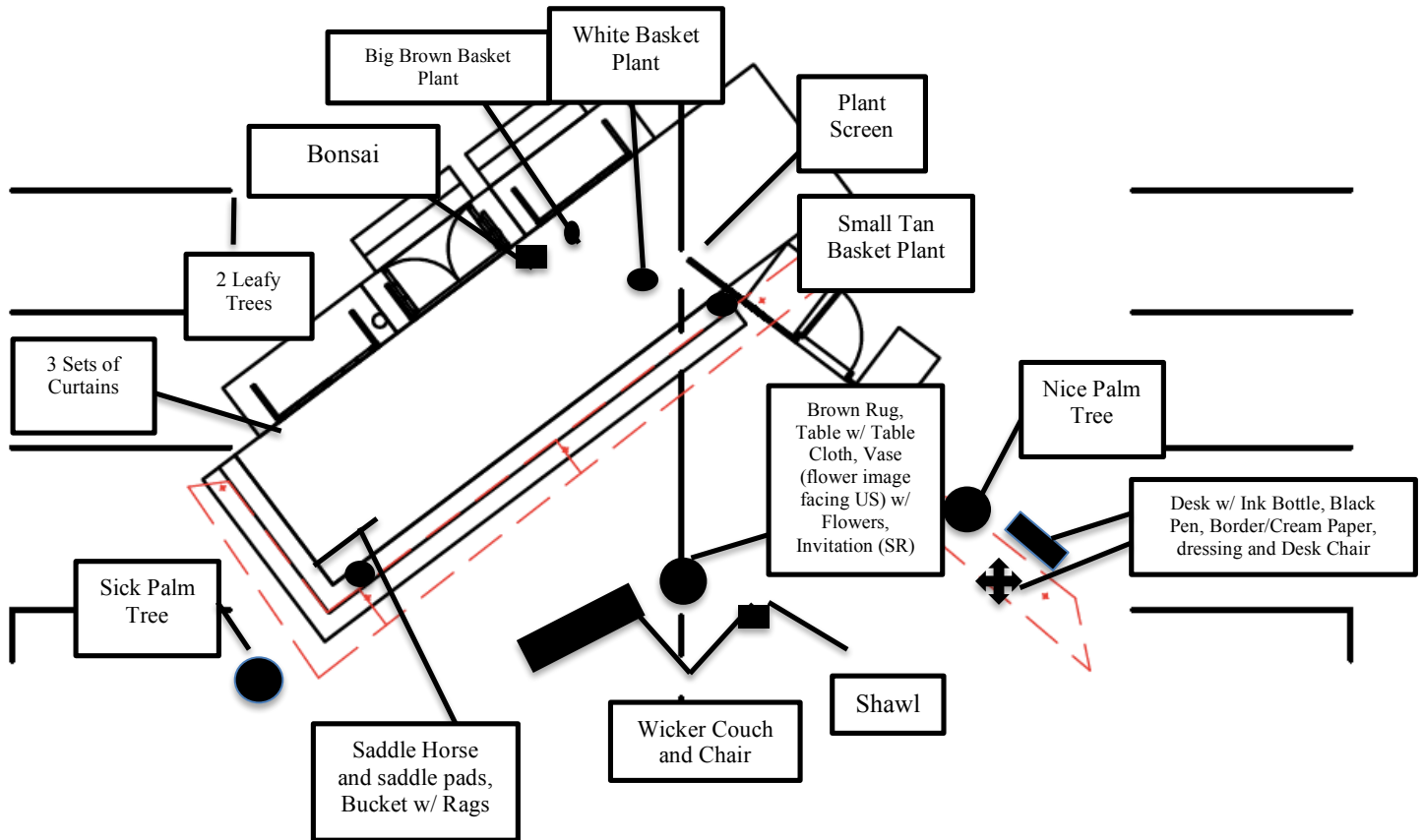
### ACT I-DRAWING ROOM IN VIOLETTA'S HOUSE (GREEN SPIKES) (27:17)



### ACT 1 RUNNING (27:17) [GREEN SPIKES]

TIME	WHERE	WHAT	WHO
<b>VIOLETTA'S HOUSE</b>			
5:00	SR 4	<b>HANDOFF</b> 10/11/12 FLUTE TRAYS TO SUPERS	SARAH A, NAN, JUDITH
6:05	SL 4	<b>CATCH HANDOFF TRACK</b> TRAY FROM SUPER MICHAEL CHAMPANGE BOTTLE TO SUPER MICHAEL TRAY TO DEAD PROP DROP AT PROP TABLE	KELLY
6:05	SL 1	<b>CATCH HANDOFF TRACK</b> TRAY FROM SUPER STEVE CHAMPANGE BOTTLE TO SUPER STEVE TRAY TO DEAD PROP DROP AT PROP TABLE	SARAH B
6:45	SR 1	<b>HANDOFF</b> 1 CHAMPANGE GLASSES AND BOTTLE TO SUPER DOMINIC	NAN
7:35	SR 4	<b>CATCH TRACK</b> BOTTLE FROM ANNINA BOTTLE TO PROP TABLE	NAN
9:25	SR 1	<b>CATCH TRACK AUTO CATCH TRACK</b> TRAY FROM DOMINIC TO SR PROP SHELF CHAIR FROM DOMINIC TO USR	JUDITH
AUTO	SR 1/3	<b>CATCH</b> CHAMPAGNE FLUTES FROM CHORUS	NAN/JUDITH

**ACT II, Scene 1 Country House Near Paris (BLUE SPIKES) (36:30)**

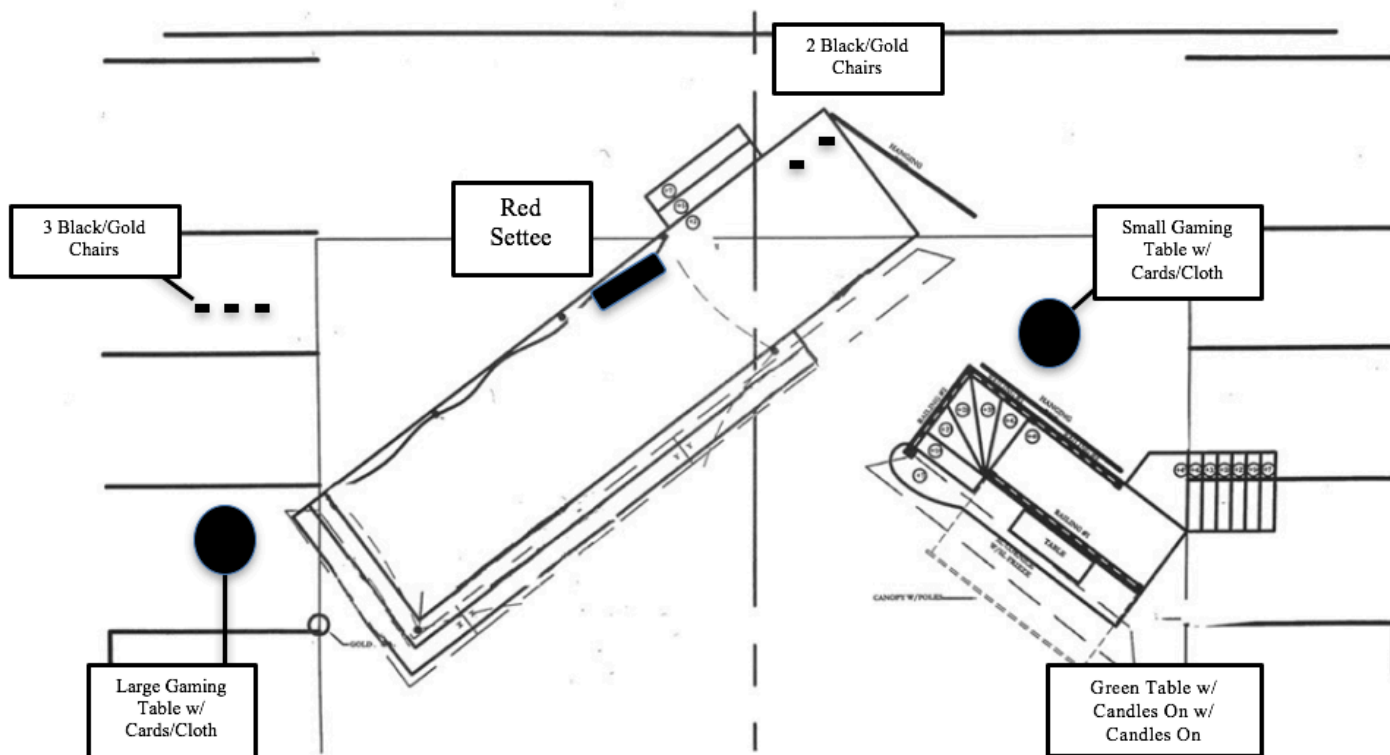


**INTERMISSION SHIFT #1 –RUNNING NOTES (36:30)**

**SHIFT INTO ACT II.1 [BLUE SPIKES]**

TIME	WHERE	WHAT	WHO
<b>SHIFT INTO ACT 2.1-THE COUNTRY HOUSE</b>			
	ONSTAGE	<b>STRIKE TRACK</b> SHAWL AND SILVER GLOVES GLOVES TO SR ALCOVE	SARAH A
27:17	ONSTAGE	<b>STRIKE</b> ALL ACT 1 FURNITURE/HAND PROPS TO SL DOOR UNIT CHAISE w/ 2 BENCHES RIDING ON WHEELS	ALL
	ONSTAGE	<b>SET</b> ALL TREES, WICKER FURNITURE, SADDLE HORSE, RUG, 3 BASKET PLANTS, DESK/CHAIR <b>RESET</b> SCREEN TO FLORAL SIDE	ALL
	ONSTAGE	<b>STRIKE</b> SHAWL FROM CHAISE AND SET ON WICKER CHAIR	SARAH A
<b>THE COUNTRY HOUSE: (36:30)</b>			
4:55	SR 3	<b>HANDOFF</b> BLACK SADDLE/BRIDLE TO CHORUS STEVE	NAN
6:00	SL	<b>CROSSOVER</b> TO STAGE LEFT TO ASSIST KELLY/SARAH B WITH STRIKING ACT 1 FURNITURE FROM DOOR UNIT AND SET ACT III FURNITURE ON UNIT	NAN/JUDITH
		<b>SET</b> 3 UPHOLSTERED CHAIRS ON DOOR UNIT	ALL
END OF ACT	ONSTAGE	<b>RETRIEVE</b> CANE, JACKET, HAT AND BROWN GLOVES FROM STAGE	SARAH A

**ACT II, Scene 2 Flora's Party (RED SPIKES) (20:02)**

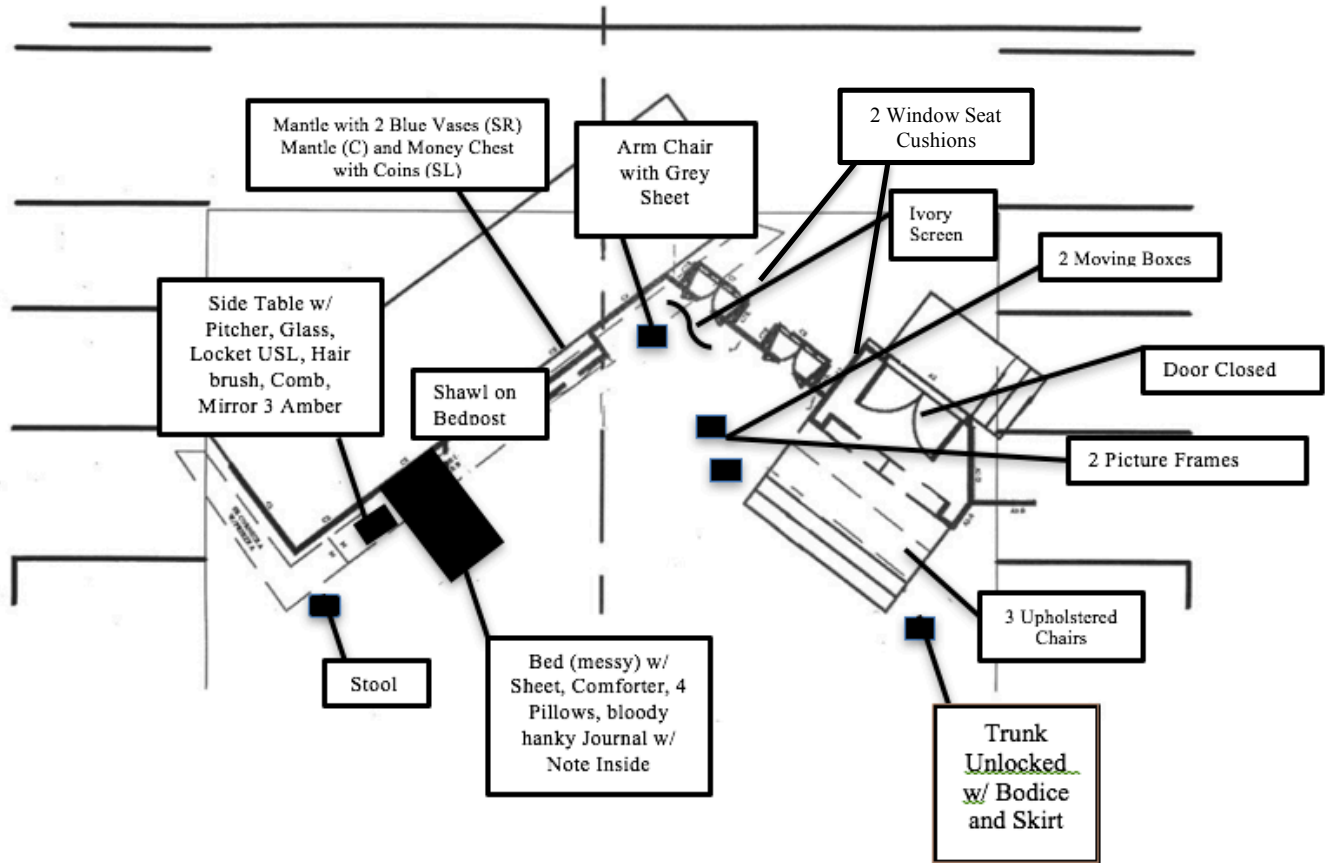


**PAUSE #2- (5:00)**

**SHIFT INTO ACT II.2 [RED ONSTAGE SPIKES]**

TIME	WHERE	WHAT	WHO
<b>5 MINUTE PAUSE - SHIFT INTO FLORA'S PARTY</b>			
36:30	BACKSTAGE	<b>STRIKE</b>	ALL ACT II.1 FURNITURE AND HAND PROPS TO SL WELL
	ONSTAGE	<b>SET</b>	RED SETTEE, 2 BLACK/GOLD CHAIRS, SMALL GAMING TABLE AND GREEN TABLE
	BACKSTAGE	<b>SET</b>	3 BLACK/GOLD CHAIRS IN SR 3 AND GAMING TABLE IN SR 1
<b>FLORA'S PARTY RUNNING NOTES: (20:02)</b>			
0:40	SR 1	<b>HANDOFF</b>	4 TAMBOURINES TO RIGHT HAND/3 TAMBOURINES IN LEFT HAND TO CORO. RICKY
4:45	UPSTAGE OF STAIR UNIT	<b>HANDOFF</b>	2 SETS OF HORNS TO 2 MALE DANCERS
6:00	UPSTAGE OF STAIR UNIT	<b>CATCH TRACK</b>	2 SETS OF HORNS FROM MALE DANCERS HORNS TO PROP TABLE (DEAD)
9:25	SR 1/3	<b>CATCH</b>	CHAMPAGNE FLUTES FROM CHORUS/KEVIN
CURTAIN IN	ONSTAGE	<b>CATCH</b>	CANE FROM MR. CHIOLDI

**ACT III, Violetta's Bedroom (BROWN SPIKES) (23:33)**



**INTERMISSION SHIFT #2 –NOTES (15:00)**

**SHIFT INTO ACT III [BROWN SPIKES]**

TIME	WHERE	WHAT	WHO
<b>SHIFT INTO ACT III: VIOLETTA'S BEDROOM</b>			
20:02	ONSTAGE	<b>STRIKE</b>	RED SETTE TO ACT III STAIR UNIT AND 3 BLACK/GOLD CHAIRS OFF STAGE RIGHT CARPENTERS WITH TENT
		<b>ASSIST</b>	
	ONSTAGE	<b>SET</b>	BED, STOOL, SIDE TABLE, ARM CHAIR, SCREEN (IVORY SIDE) 2 MOVING BOXES. 2 PICTURE FRAMES, 3 UPHOLSTERED CHAIRS, AND TRUNK (OPEN) w/ BODICE/SKIRT
	BACKSTAGE SL	<b>SET</b>	CHORUS MASTER PODIUM IN SL4 ON WHITE SPIKES
<b>ACT III RUNNING NOTES:</b>			
18:20	SL 3	<b>CATCH TRACK</b>	PROP SKIRT FROM ANINNA TO PROP TABLE
ANYTIME	KITCHEN	<b>WASH</b>	ALL FLUTES
<b>WHEN MAIN IS IN:</b>			
END OF SHOW	SL 1	<b>STRIKE</b>	TRUNK FROM DSL FOR BOWS
			KELLY/SARAH B



2019-2020 Season

# *La Traviata*

## PROPS RUN

Bruce/White  
Ricordi  
printed on: 10/18/2019 10:10 PM  
Version: Final  
S. Ackerman

### **POST-SHOW NOTES**

WHAT	WHO
<b>STRIKE</b> ANY PROPS LEFT ONSTAGE, RETURNING LOCKET FROM BED TO PROPT TABLE	ALL
<b>TIDY</b> PROP TABLES	
<b>RETURN</b> PROPS TO APPROPRIATE STARTING PRESET FROM DEAD PROP DROP	
<b>REPORT</b> ANY PROP NOTES TO ASM SARAH	

### **CHECK STOCK**

WHAT	WHO
BORDERED PAPER CREAM BLANK PAPER PAPER MONEY	ALL