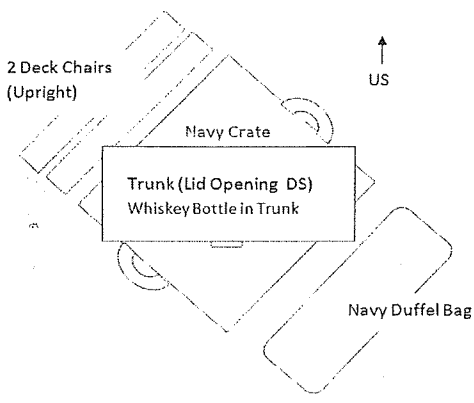
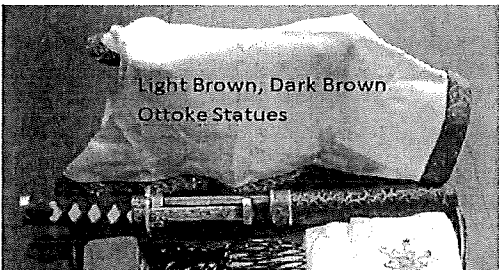
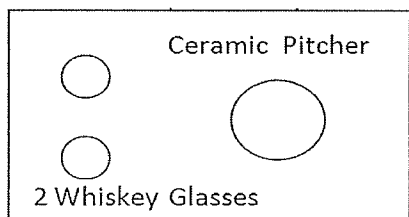
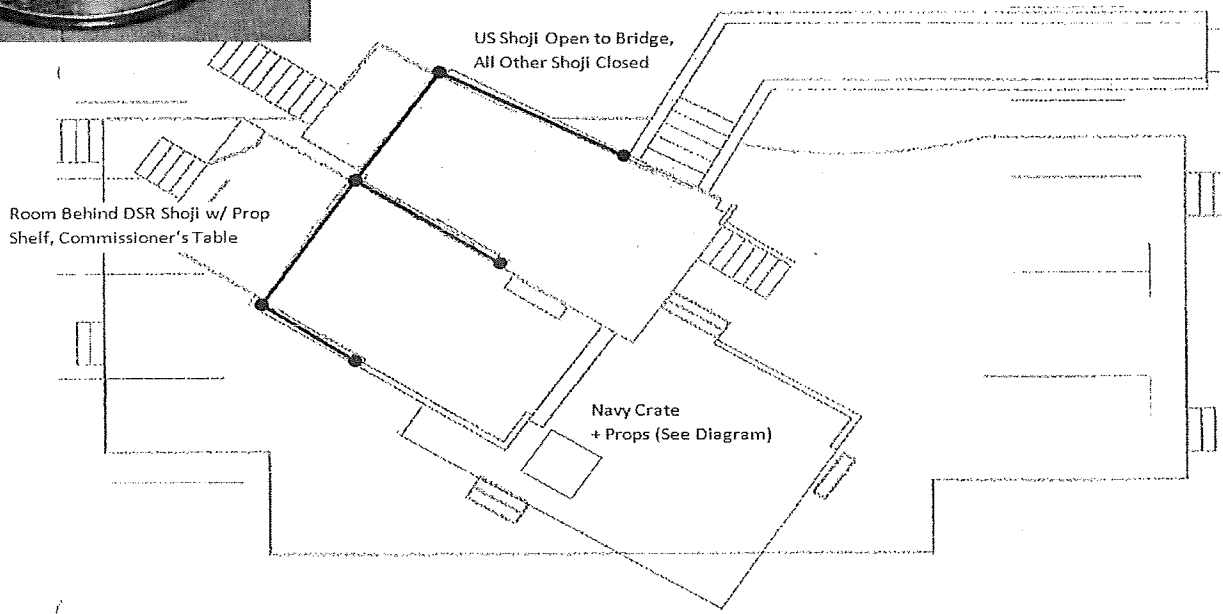


TOP OF SHOW PRESET (GRAY SPIKES)

| Stage Right | Onstage | Stage Left |
|--|---|---|
| Gold Cigarette Case | White Navy Crate* | Goro's Postcards |
| 4 Cigarettes | 2 Deck Chairs (leaning upright against crate) | Money |
| 4 Matches | Navy Trunk (On top of crate) | Photo of Butterfly |
| Strike Strip | Whiskey Bottle w/ Colored Water | 12 Geisha Parasols |
| <i>Pinkerton's Robe</i> | Trunk Dressing (Clothes)* | 12 Geisha Fans |
| Music Stand with Light (for ASM) | Navy Duffel | Butterfly's Parasol |
| <u>Navy Crate, Trunk, Etc.</u> | | <u>FILL Petal Bag</u> |
|  | | Butterfly's Fan |
| | | Rosary |
| | | Aunt's Parasol |
| | | Cousin's Parasol |
| | | Marriage Document |
| | | Ink Brush |
| | | Ink Pot |
| | | Circular Black Tray of Gifts* |
| | | 2 Otoko Ancestor Statues |
| | | Covered with Handkerchief |
| <u>Gift Tray (Act 1)</u> | | Knife in Sheath |
|  | | White Cloth with Pin |
| | | Opium Pipe |
| <u>Rectangular Tray ("Milk-punch Tray")</u> | | Black Comb |
|  | | Red Box |
| | | White Fan |
| | | Wrapped Gift |
| | | Wooden Beads |
| | | Music Stand with Light (for Mo. Harris) |
| | | Music Stand (for ASM) |

* indicates photo or diagram below



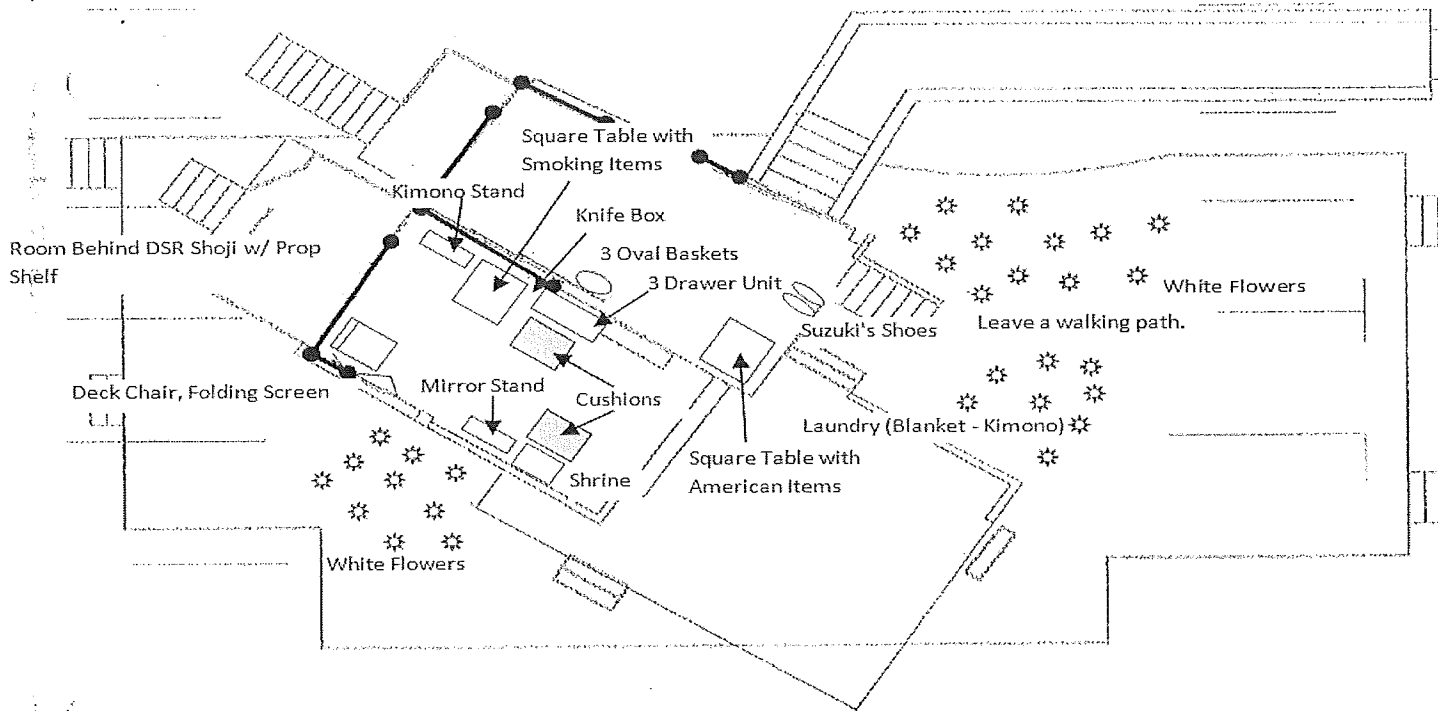
ACT 1 Running Notes (49:28)

| Time | Location | Action |
|-------|---|--|
| 7:30 | Down Stage Right (R2) | CATCH Milk-Punch Tray and Ceramic Pitcher from Super Joshua, RE-SET Tray with Tea for Act 2, STRIKE Ceramic Pitcher |
| | Down Stage Right (R2) | CATCH Sharpless' Hat from Suzuki |
| 13:30 | Up Stage Right (R3) | CATCH Navy Crate, Trunk, and Duffel from Supers Joshua and Jong, STRIKE all to storage |
| | Down Stage Right (R2) | CATCH 2 Deck Chairs from Suzuki, STRIKE 1 to storage, 1 stays for Act 2 |
| | Down Stage Right (R2) | CATCH 2 Whiskey Glasses and Bottle from Goro, CLEAN and STRIKE |
| 16:00 | Down Stage Right (R2) | CATCH Butterfly's Parasol from Suzuki, STRIKE to Storage |
| 20:00 | Down Stage Right (R2) and Up Stage Right (R3) | CATCH 12 Geisha Parasols from Supers Joshua and Jong, and Suzuki, STRIKE to Storage |
| 21:00 | Up Stage Right (R3) | CATCH Aunt and Cousin Parasols from Suzuki, STRIKE to Storage |
| 25:30 | Up Stage Right (R3) | CATCH Gift Tray from Suzuki, RE-SET for use in Act 2 |
| 28:30 | Down Stage Right (R2) | CATCH Commisioner's Table from Supers Jong and Joshua, HANDOFF Sake Trays to Jong (15), Joshua (10), and Goro (2) |
| 32:30 | Up Stage Left (L3) | CATCH Sake Cups and Fans from Chorus (They will be singing until 34:00) |
| 36:30 | Up Stage Right (R3) | HANDOFF Pinkerton's Robe and Cigarette Case to Super Joshua, STRIKE Tray with 2 Sake Cups from platform |
| 36:30 | Down Stage Right (R2) | FYI: Butterfly QUICK COSTUME AND WIG CHANGE in Room Behind DSR Shoji. Please do not enter while quick change in progress. |

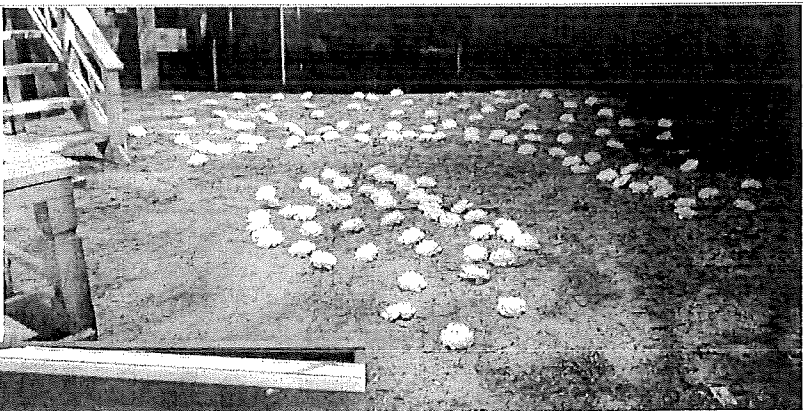
INTERMISSION (20:00)

| Location | Action |
|----------|---|
| Onstage | STRIKE Gold Cigarette Case from SL Railing, TRACK to UC Square Table |
| Onstage | CATCH Rosary from Butterfly, TRACK to UC Square Table |
| Onstage | SET Furniture and Dressing According to List (pg.4) and Diagrams (pg. 3, 4, and 5) |

Act Two Onstage Diagram



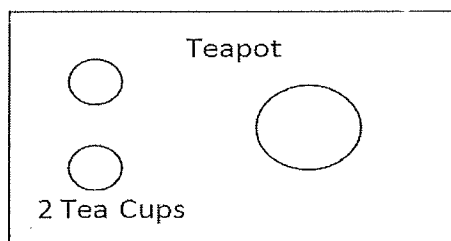
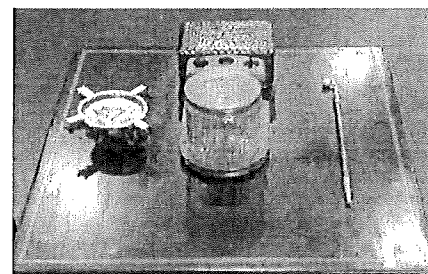
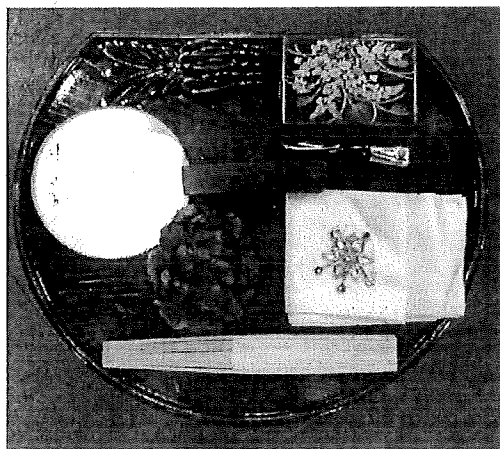
SR Flowers



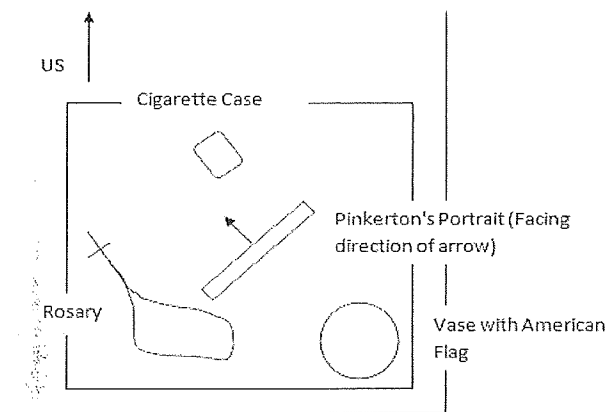
SL Flowers

ACT 2 PRESET (GREEN SPIKES)

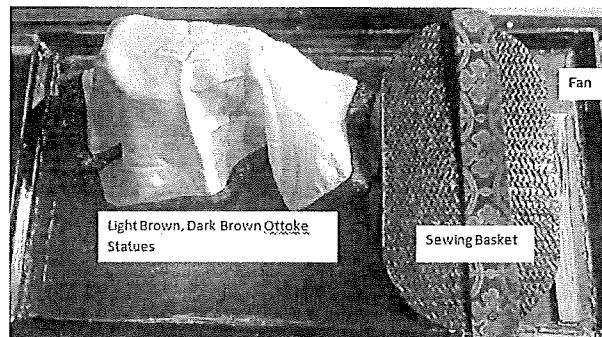
| Prop Shelf Behind DSR Shoji | Onstage | Stage Left |
|---|---|---|
| Rectangular Black Tray* | Middle Platform | Spyglass |
| 2 Teacups | Kimono Stand | Butterfly's Fan |
| Teapot | <i>Wedding Kimono</i> | Letter in Envelope |
| Practical Colored Water | Square Black Table*(Smoking) | Sharpless' Reading Glasses |
| 7 Paper Lanterns (Check batteries.) | Dragon Ashtray | 2 Black Umbrellas |
| Stage Right | Opium Pipe | Toy Horse |
| 1 Music Stand with Light (for ASM and Bird Whistle) | Red Wooden Box | <i>Kate Pinkerton's Purse</i> |
| | 3 Coins | Money |
| Tea Tray | Smoking Set | 2 Music Stands with Lights (1 for Mo. Harris and Bird Whistle, 1 for Timpani Player and Viola Player) |
| | 2 Pipes | 1 Music Stand (for ASM) |
| | Tobacco Jar | |
| | Tobacco in Jar | |
| | Knife Box (LATCH OPEN, door shut) | Smoking Table |
| | Ceremonial Knife in Sheath | US |
| | 3 Drawer Unit* | |
| | On Top: | |
| | Ottoke Ancestor Statues | |
| | Covered in White Cloth | |
| | Sewing Basket | |
| | Fan | |
| | On Open Shelf: | |
| | Wedding Gift Tray* | |
| | White Cloth with Pin | |
| | <i>Red Flower for Hair</i> | |
| | White Fan | Onstage Cont. |
| | Makeup Brush | Upper Platform |
| | Makeup Box | Square Black Table*(American) |
| | Black Comb | Black Table Top |
| | Small Round Mirror | White and Blue Vase |
| | Middle Drawer: <i>Trouble's Sailor Shir</i> | American Flag (in vase) |
| | 2 Cushions (1 in front of Drawers, 1 in front of Buddha Shrine) | Pinkerton Portrait |
| | Buddha Shrine | Brass Cigarette Case |
| | 10" Gold Buddha (inside) | Rosary |
| | Prayer Bell (on ground US of Shrine) | Small Toy Boat (under table) |
| | Striker | 3 Oval Baskets (US of Midstage screens) |
| | Mirror Stand | Lower Platform |
| | Large Mirror (handle US) | Laundry Kimono (on US railing) |
| | Deck Chair | Blanket (on US railing) |
| | Red Accordion Screen | Garden |
| | | Many Flowers USL* |
| | | Many Flowers DSR* |

Tea Tray**Gift Tray (Act II)**

American Table



Top of Dresser



ACT 2 RUNNING NOTES (1:23:25)

| Time | Location | Action |
|---------------|-----------------------|---|
| 18:00 | Down Stage Right (R2) | HANDOFF Tea Tray to Suzuki |
| 38:30 | Down Stage Right (R2) | CATCH Folded Laundry Kimono from Trouble, STRIKE to Storage |
| 46:00 - 47:30 | Down Stage Right (R2) | <p>CATCH 3 Oval Baskets and Suzuki's Zori Sandals</p> <p>CATCH Trouble's Kimono from Suzuki, TURN ON and HANDOFF 4 Small Lanterns to Suzuki</p> <p>CATCH Tea Tray from Suzuki, CLEAN and STRIKE Tea Pot and Cups</p> <p>TURN ON and HANDOFF 3 Small Lanterns to Suzuki</p> |
| 1:00:00 | Up Stage Right (R3) | STRIKE Blanket from R3 platform (waiting until Madame Butterfly has left the platform) |
| 1:23:30 | Stage Left (L2) | STRIKE Knife and Sheath from Stage (Wait until curtain has landed.) |

POST SHOW

| Location | Action |
|----------|--|
| Onstage | CLEAN UP Flower Petals, White Flowers |